

Falcon 276

276.52 Acres

Laclede County, MO

\$849,000



HAYDEN  OUTDOORS®

Falcon 276

TOTAL ACRES:

276.52

PRICE:

\$849,000

COUNTY:

Laclede County

CLOSEST TOWN:

Lebanon, MO

Activities & Amenities:

ATV/Off Road
Borders Public Lands
Food Plots
Hiking/Climbing
Hunting - Big Game
Hunting - Predator/Varmint
Hunting - Small Game
Hunting - Turkey
Timber
Wooded

Land Details:

Address: TBD State Highway K,
Falcon, Missouri 65470, USA
Closest Town: Lebanon
Total Acres: 276.52
Zoning: Ag
Estimated Taxes: \$215 - 2022
Source of lot size: Survey

Property Summary

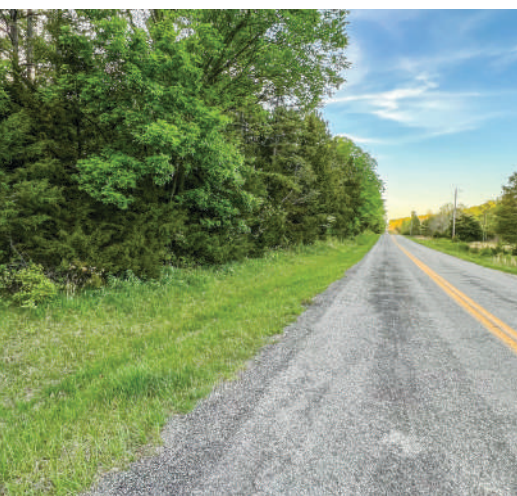
Falcon 276 is a premiere recreational property spanning 276.52 surveyed acres that offers paved highway access, live water, and numerous building sites. This tract borders National Forest and sits less than 20 minutes from Lebanon and is only 40 miles from Fort Leonard Wood. There's a shooting house, tree stand, and multiple planted food plots in place and ready for hunting season!!

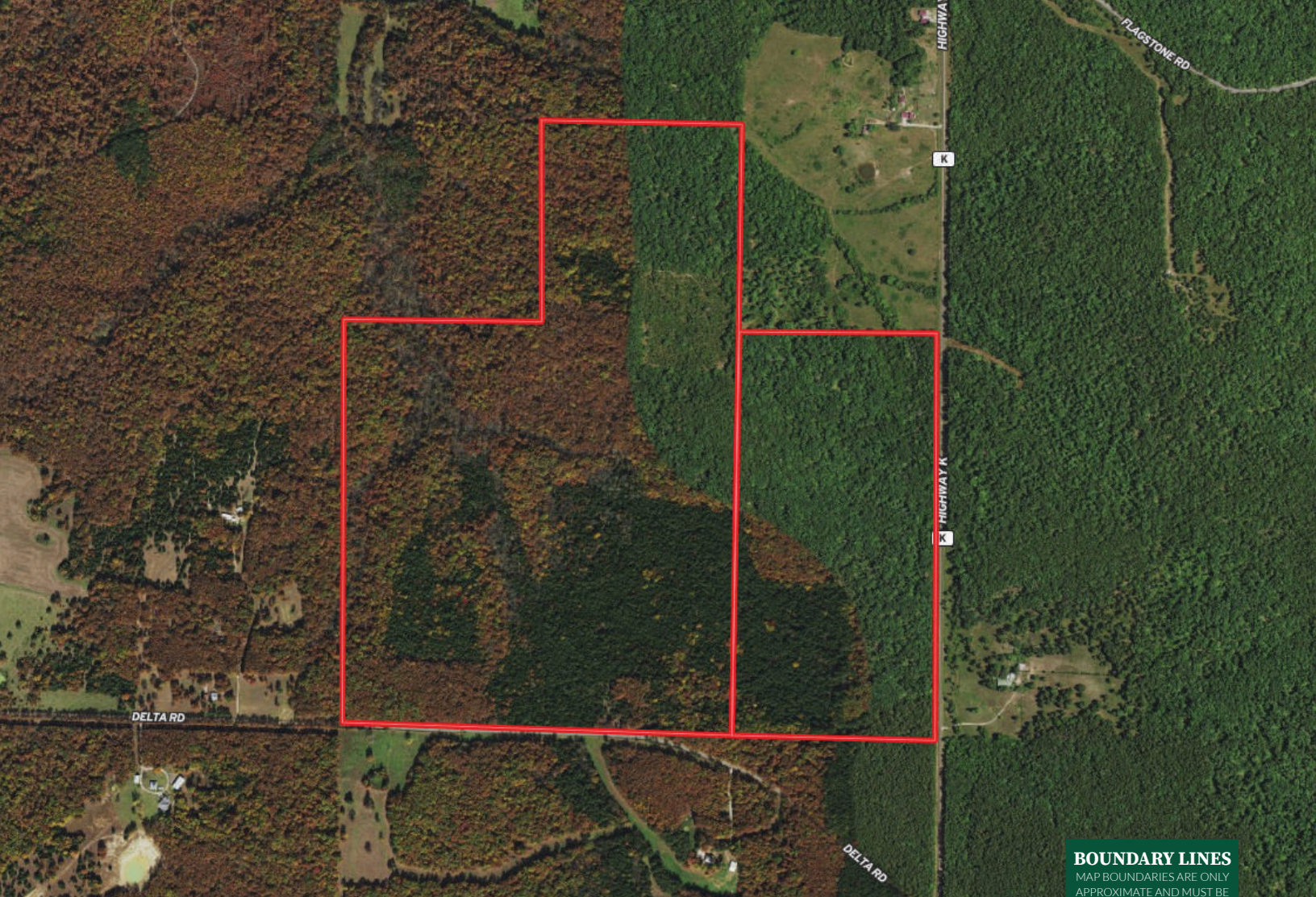
Land

Falcon 276 offers privacy and seclusion, has multiple locations to build, but was developed with the outdoor enthusiast in mind. From the access points to food plot engineering, no detail has been left out. Located right at 2 hours from Saint Louis, this property has multiple access points with one coming off State Highway K and the other off Delta Road. Being able to access the land from different sides allows you to quickly and easily enter and exit without disturbing wildlife as well as playing wind directions. The trail system thru was just built and you can easily drive a full sized truck or larger tractors and farm equipment. There's a spring as well as a live water creek running throughout the property and also a pond thats tucked away in the timber just adjacent to a food plot! There's five newly developed food plots that have been designed for easy and concealed access with the ability to hunt multiple wind directions. These food plots vary in size from small bowhunting type plots to larger 2+ acre destination fields. The property also directly borders just over 500 acres of National Forest with an additional 2,400 acres sitting just across the highway.

*All information provided is deemed reliable but is not guaranteed and should be independently verified. Hayden Outdoors and its affiliates makes no representation or warranties as to the accuracy, reliability, or completeness of the information, text, property boundaries, graphics links or other items contained in any website, print, or otherwise linked to or from this website. The sale offering is made subject to errors, omissions, change of price, prior sale or withdrawal without notice.



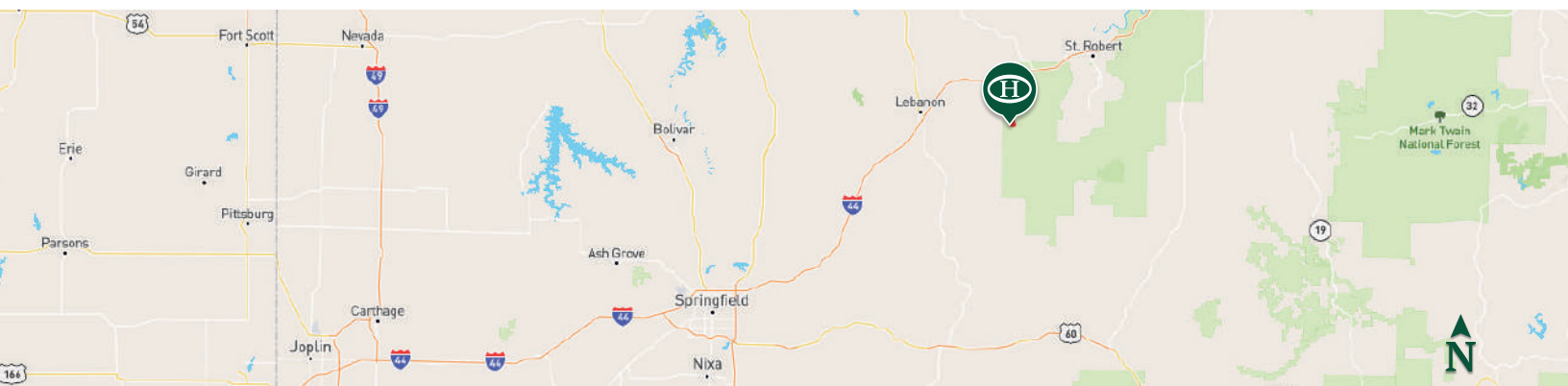




 Boundary

BOUNDARY LINES

MAP BOUNDARIES ARE ONLY
APPROXIMATE AND MUST BE
VERIFIED FOR ACCURACY.



Jeff Lovan

📍 Agent, Licensed in AR, IA, KS, MO
✉ JeffLov@HaydenOutdoors.com
📞 417.252.1463


**HAYDEN
OUTDOORS.**
REAL ESTATE

